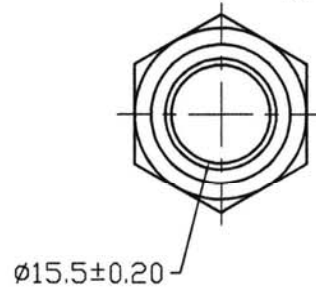
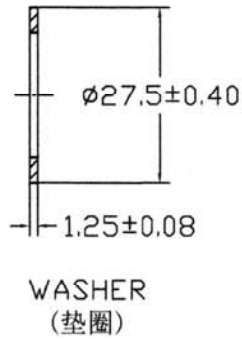
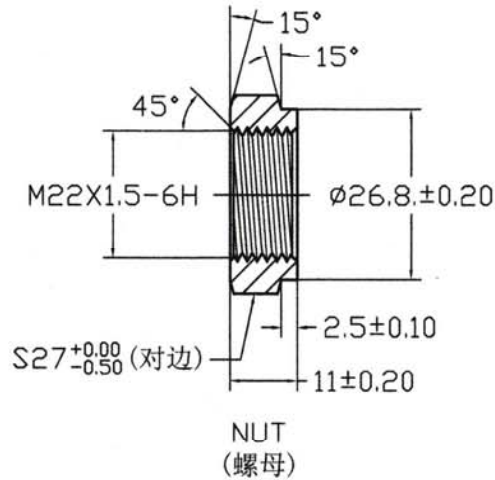


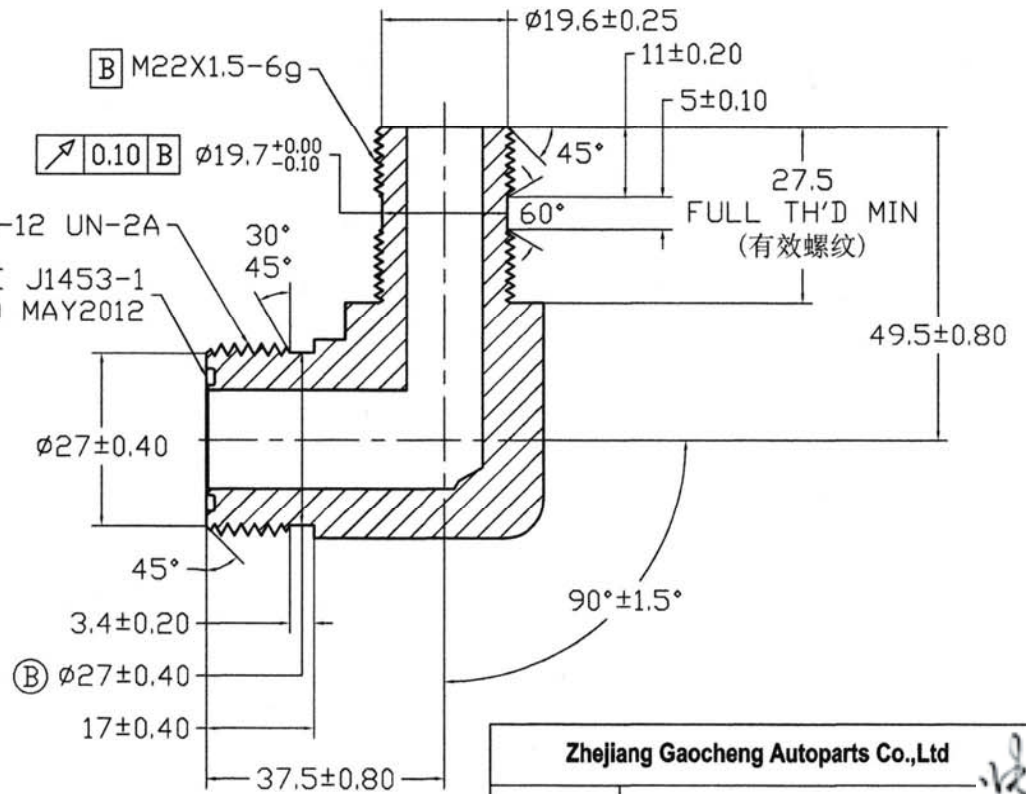
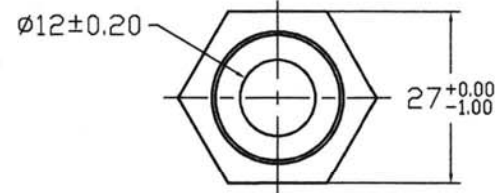
- 注：1. 不要装配O型圈；  
 2. 垫圈的装配要求松紧合适，即装配后用手可以轻松移动垫圈，  
 但不用手移动垫圈时，不论如何放置该零件，垫圈都不会任意滑动。

REV 更改号	DATE 日期	REVISION DETAILS 更改内容	APPD 审核并批准
A	Jul.04,2019	Drawing Update	
B	18th Nov.,2022	Change Dia. 27.15 +/-0.15 to 27.00 +/-0.40.	



UNLESS SPECIFIED  
 ALL DIMENSIONS IN mm,  
 MACHINED SURFACES Ra=3.2um,  
 ANGLE TOLERANCES  $\pm 1^\circ$ ,  
 Other tolerance except angles,  
 in accordance with  
 GB/T1804-2000(ISO2768-1)-m  
 and GB/T1184-1996(ISO2768-2)-m

其它事项,  
 图示尺寸单位为mm,  
 未注机加工表面粗糙度 Ra=3.2um,  
 未注角度公差  $\pm 1^\circ$ ,  
 其它未注公差(除角度外)均按:  
 GB/T1804-2000(ISO2768-1)-m 和  
 GB/T1184-1996(ISO2768-2)-m



Zhejiang Gaocheng Autoparts Co.,Ltd	
PART No 零件名	6801-12FS-M22NWO
SCALE:	APPD: 批准 <i>EL</i> DRN: Pan 制图 2019.07.04
NTS	DATE: 日期 18/11/22 CHK: Pan 审核 2019.07.04

MATERIAL Chinese steel 45

FINISH Remove all sharp edges,burrs,slivers and swarf, break all edges 0.127~0.254mm.  
 ZINC PLATING WITH 8um MICRONS MINIMUM PLATING THICKNESS AND TRIVALENT CHROMATE PASSIVATION  
 AND WITHSTAND 96 HRS TO WHITE / 144 HS TO RED RUST IN SALT SPRAY TEST.

去除所有毛刺, 铁屑等残留物, 锐边倒钝0.127-0.254mm.  
 镀锌, 三价铬钝化, 银白色, 盐雾试验96小时无白斑, 144小时无红锈, 镀锌层厚度大于8um.